

Commercial Property in Psychiko

For Lease

RETAIL STORE

3, Solomou str.,
Psychiko



CUSHMAN &
WAKEFIELD



PROPRIUS



FOR LEASE 3, Solomou str., Psychiko

The retail space consists of the following surface per level :

- 1st Basement 225 sq. m.
- Ground Floor: 257,9 sq. m.
- Mezzanine: 104.5 sq.m.
- 1st Floor 153,48 sq. m.
- *Potential available storage/parking area of 225 sq.m. on B basement level*

Quoted Rent: upon expression of interest

740 sq.m. of unique retail space

PROPERTY HIGHLIGHTS

740

sq.m.

Asking Rent

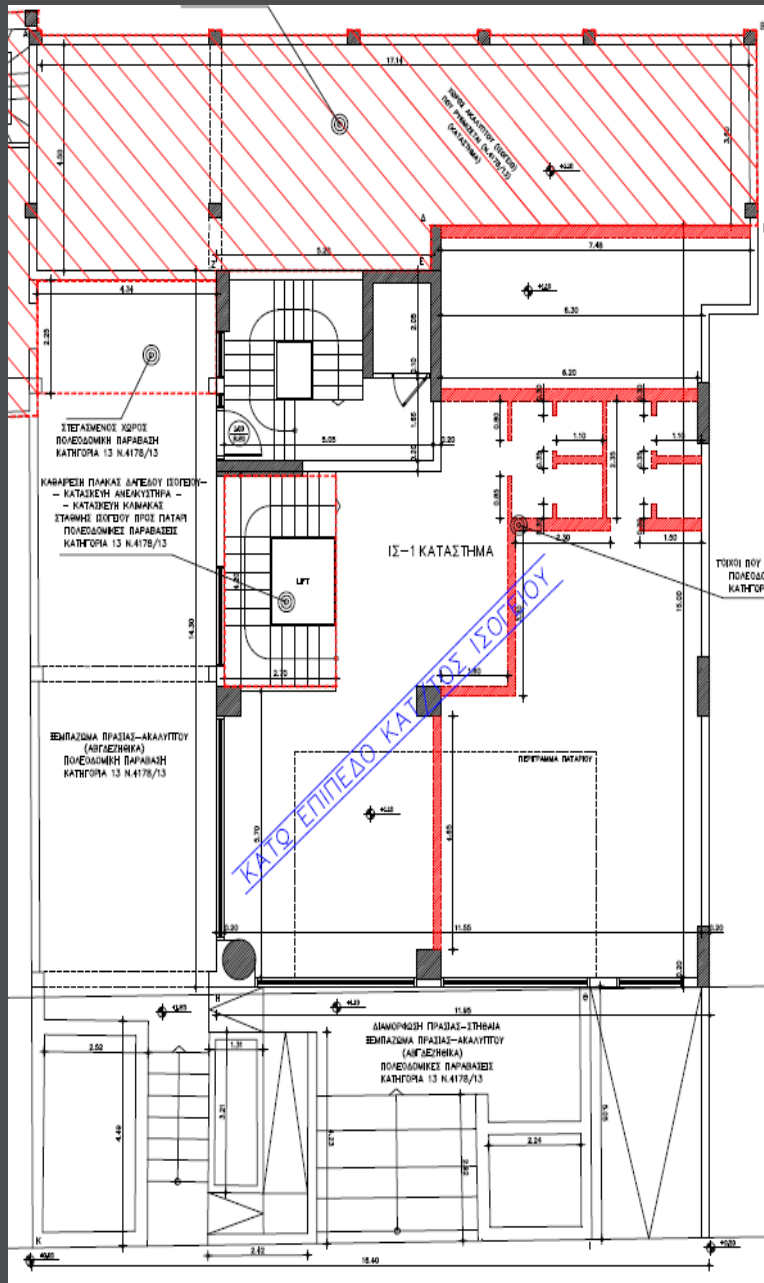
Upon expression of interest

4 Levels

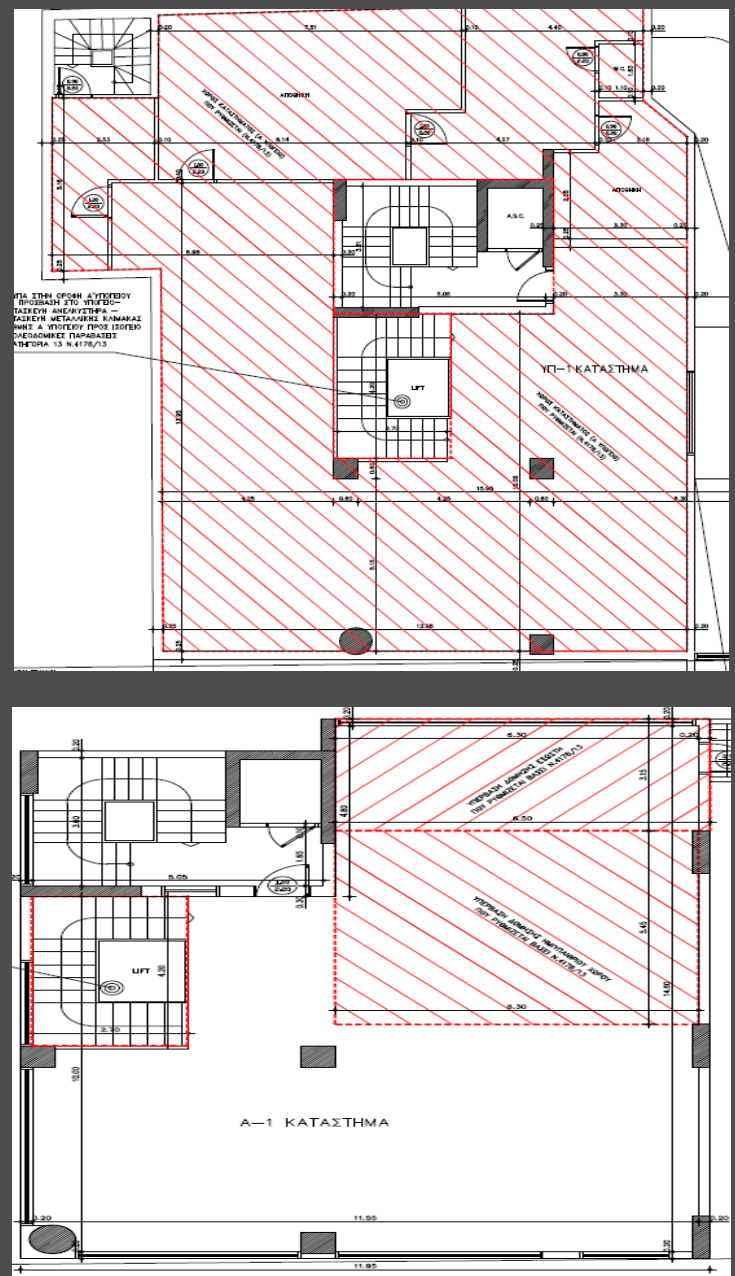
of Retail Area

- The property is located in the heart of the retail Market in Psychiko, with high traffic flow, strong activity of fashion brands, restaurants, coffee shops, banks and other uses.
- *An auxiliary B basement storage/parking area of 225sq.m could be added*
- Well maintained, fully equipped property with great projection
- Access to all levels through lift and staircase

GROUND FLOOR



BASEMENT/ 1ST FLOOR





Public

Public

³ **Panagiotis Tsaousis**

+30 210 74 80852

+30 697 334 07 85

Panagiotis.tsaousis@cwproprius.com



**CUSHMAN &
WAKEFIELD**



PROPRIUS